

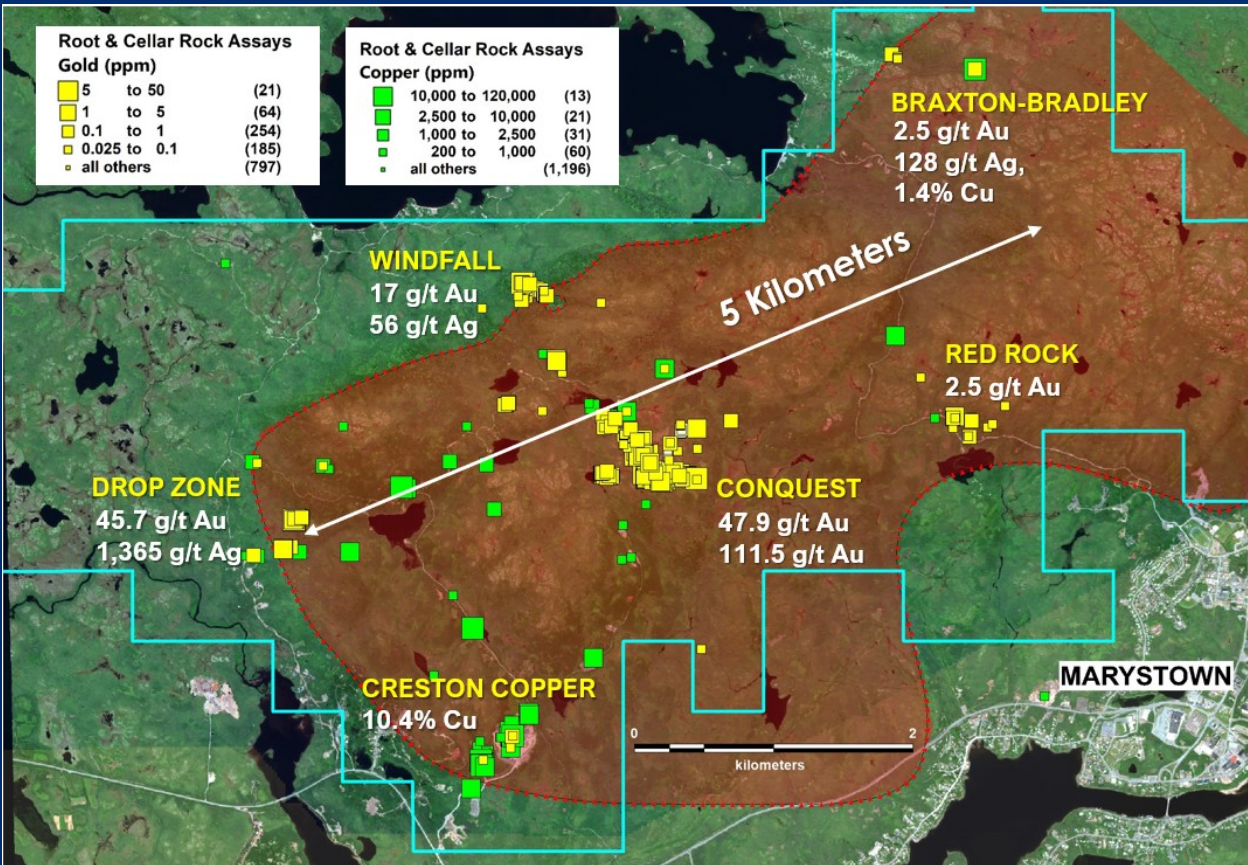


### EPITHERMAL GOLD/COPPER PORPHYRY

Supported by hundreds of gold anomalous surface samples, modelling of the data has defined a very large epithermal gold-silver system in the **Conquest Zone** in **Root & Cellar**.



Root & Cellar Rock Assays Gold (ppm)		Root & Cellar Rock Assays Copper (ppm)	
5 to 50	(21)	10,000 to 120,000	(13)
1 to 5	(64)	2,500 to 10,000	(21)
0.1 to 1	(254)	1,000 to 2,500	(31)
0.025 to 0.1	(185)	200 to 1,000	(60)
all others	(797)	all others	(1,196)



High grade copper, in a porphyry setting, exists within two kilometers of the Conquest Gold System at Creston.



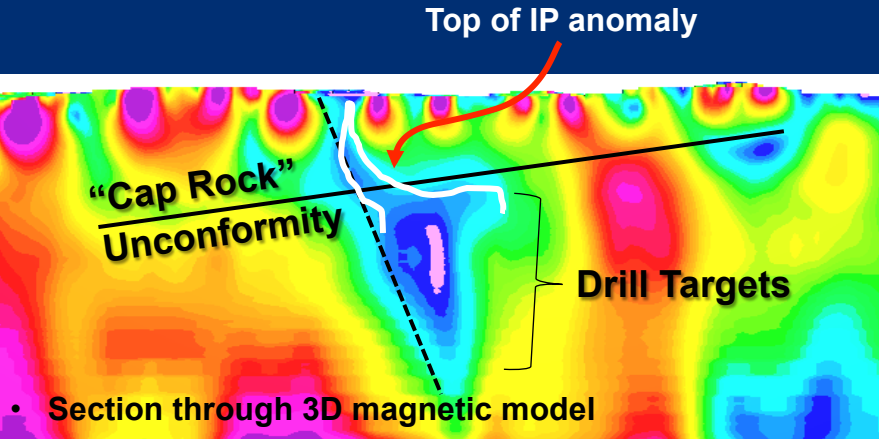
**TSX-V: NRN**

[www.northern-shield.com](http://www.northern-shield.com) / [info@northern-shield.com](mailto:info@northern-shield.com)

# A UNIQUE OPPORTUNITY...



ROOT & CELLAR PROPERTY



- Conquest North and South IP targets combine for a strike-length of 3 kilometers.
- IP anomalies generally correlate well with distinct magnetic low
- Locally pooling of mineralization at sub-horizontal contacts and unconformity
- Main vein and breccia pipe expected below unconformity
- Some mineralized veins penetrate up into “cap rock”

