

NORTHERNSHIELD RESOURCES INC.

Corporate Presentation



January 2019



NORTHERNSHIELD
RESOURCES INC.



NORTHERN SHIELD
RESOURCES INC.

FORWARD LOOKING STATEMENT



This document contains statements concerning the potential for PGE, Ni–Cu Gold and other mineralization at Huckleberry, Shot Rock, Five Islands, Grand Pabos and Estcourt Station; geological, geophysical, geochemical and geometrical analyses at Huckleberry, Shot Rock, Five Islands Grand Pabos and Estcourt Station and comparisons of the properties to known epithermal gold deposits and other expectations, plans, goals, objectives, assumptions, information or statements about future events, conditions, results of operations or performance that may constitute forward-looking statements or information under applicable securities legislation. Such forward-looking statements or information are based on a number of assumptions which may prove to be incorrect, and such possible comparisons are provided for illustrative or analogical purposes only.

Although Northern Shield believes that the expectations reflected in such forward-looking statements or information are reasonable, undue reliance should not be placed on forward-looking statements because Northern Shield can give no assurance that such expectations will prove to be correct. Forward-looking statements or information are based on current expectations, estimates and projections that involve a number of risks and uncertainties which could cause actual results to differ materially from those anticipated by Northern Shield and described in the forward-looking statements or information. These risks and uncertainties include but are not limited to geological, geophysical, geochemical and geometrical interpretation, the ability of Northern Shield to obtain equipment, supplies and qualified personnel necessary to carry on its exploration and operations, the general risks and uncertainties involved in mineral exploration and those other risks and uncertainties set forth in Northern Shield's management's discussion and analysis filed on SEDAR at www.sedar.com under its profile.

The forward-looking statements or information contained in this document are made as of the date hereof and Northern Shield undertakes no obligation to update publicly or revise any forward-looking statements or information, whether as a result of new information, future events or otherwise, unless so required by applicable securities laws.



NORTHERN SHIELD
RESOURCES INC.

INTRODUCTION

TSX-V: NRN





- Although better known for its expertise in grass-roots Ni-Cu-PGE exploration, Northern Shield's model-driven approach to exploration allows it to quickly adapt to *Unique Opportunities*.
- This Unique Opportunity became the **Shot Rock Property** in Nova Scotia where Northern Shield, through its wholly-owned subsidiary **Seabourne Resources**, discovered a large-scale, low sulphidation epithermal gold system, the first of its kind in Nova Scotia.



NORTHERNSHIELD
RESOURCES INC.

PROPERTY LOCATION



-  **Ni-Cu-PGE**
-  **Au (Epithermal) and related deposits**



NORTHERN SHIELD
RESOURCES INC.

NOVA SCOTIA & SHOT ROCK GOLD PROPERTY

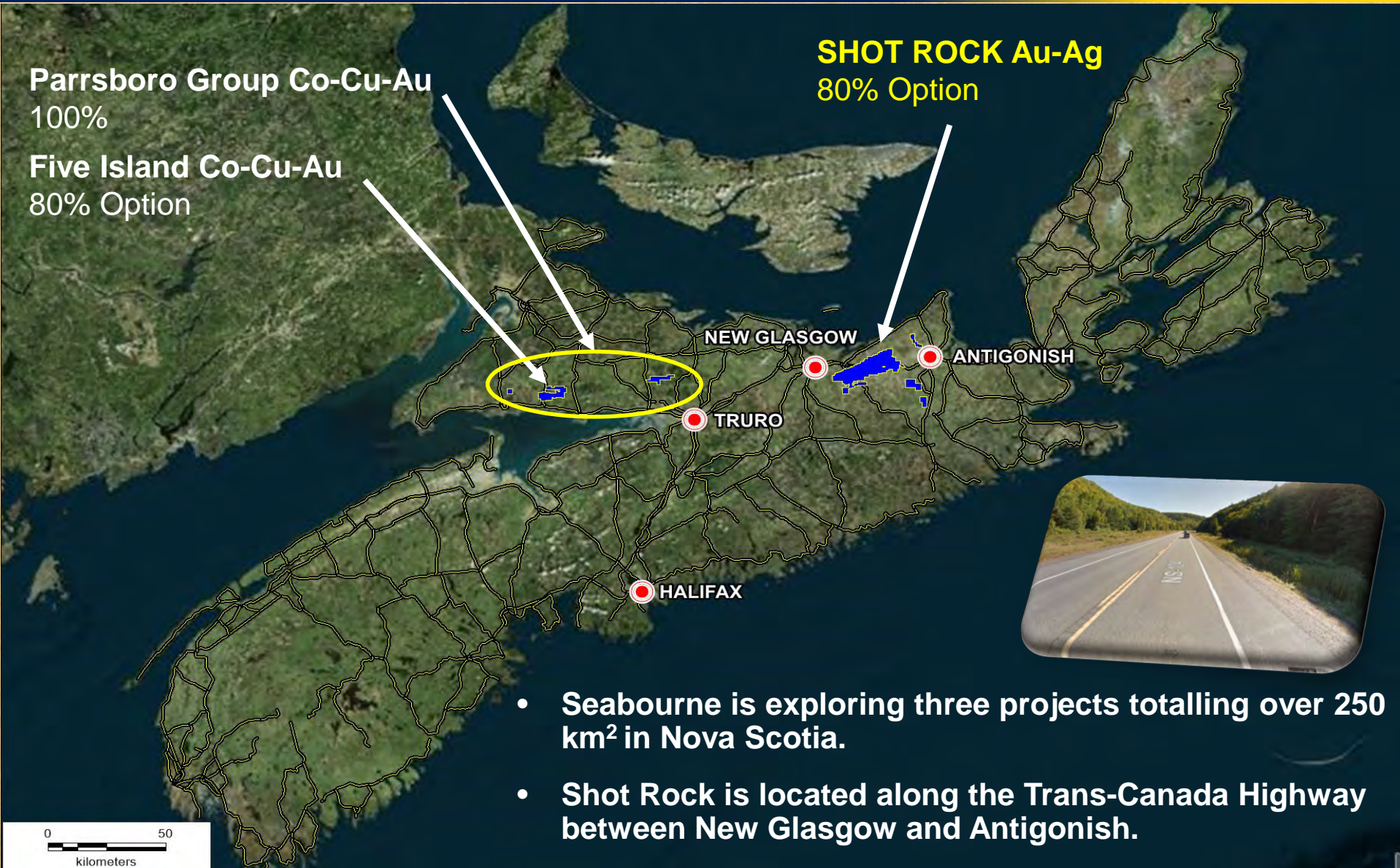
TSX-V: NRN



Parrsboro Group Co-Cu-Au
100%

Five Island Co-Cu-Au
80% Option

SHOT ROCK Au-Ag
80% Option

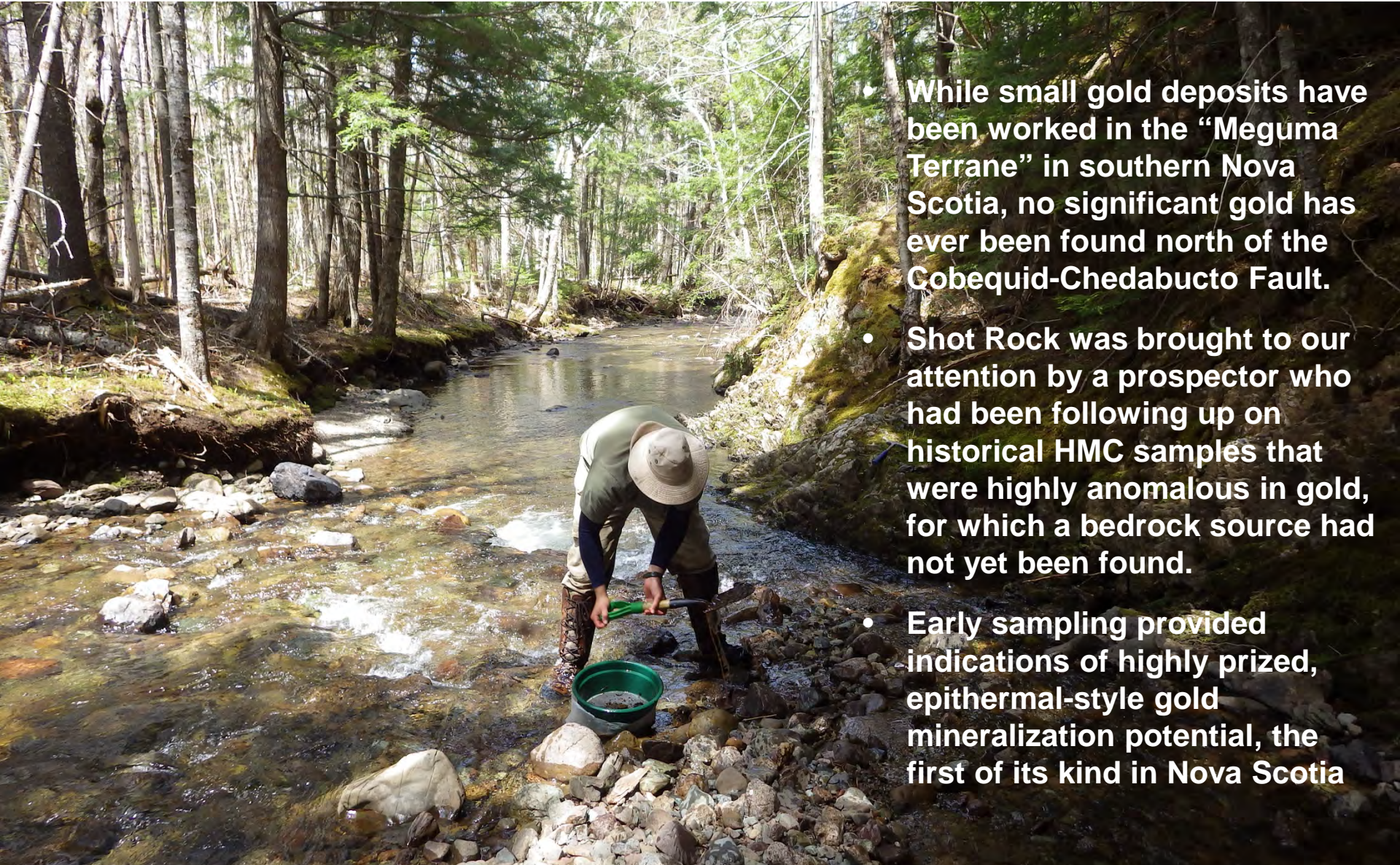


- Seabourne is exploring three projects totalling over 250 km² in Nova Scotia.
- Shot Rock is located along the Trans-Canada Highway between New Glasgow and Antigonish.





INTRODUCTION



- While small gold deposits have been worked in the “Meguma Terrane” in southern Nova Scotia, no significant gold has ever been found north of the Cobequid-Chedabucto Fault.
- Shot Rock was brought to our attention by a prospector who had been following up on historical HMC samples that were highly anomalous in gold, for which a bedrock source had not yet been found.
- Early sampling provided indications of highly prized, epithermal-style gold mineralization potential, the first of its kind in Nova Scotia



NORTHERNSHIELD
RESOURCES INC.

UNDERSTANDING EPITHERMAL SYSTEMS

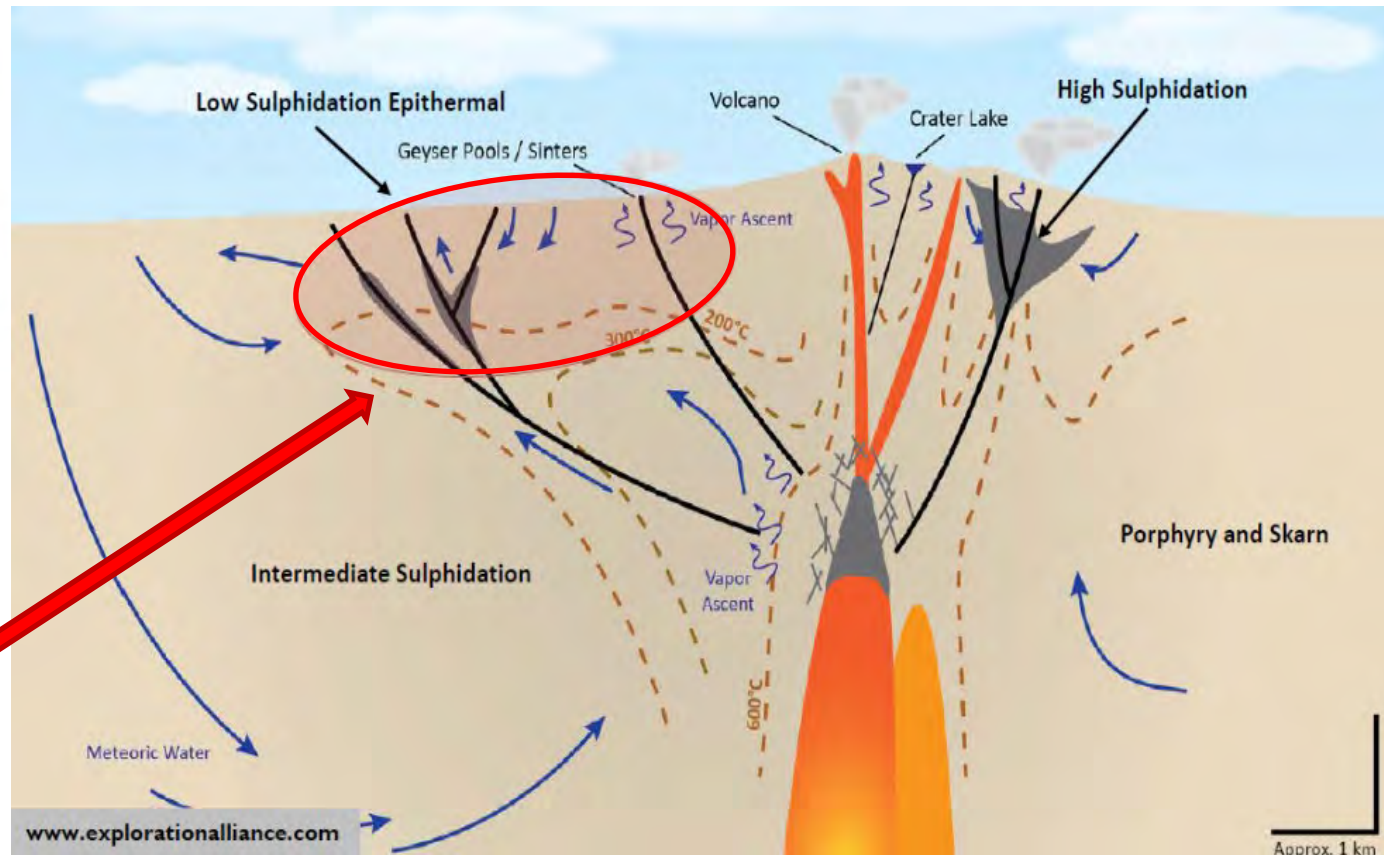
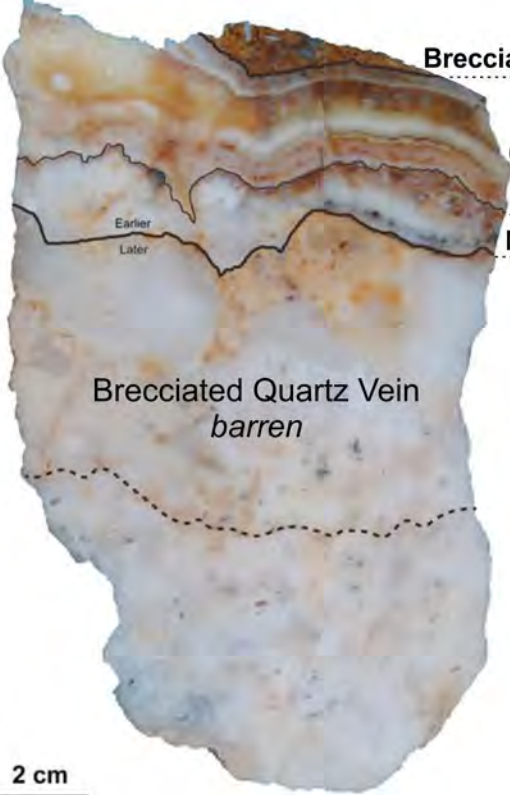
TSX-V: NRN



Brecciated Shimanto Supergroup

Crustiform and colloform bands - Colloform quartz & adularia bands

Microcrystalline quartz and crustiform bands - Pyrite & polybasite, chalcopyrite, electrum



Shot Rock Property



SHOT ROCK PROPERTY

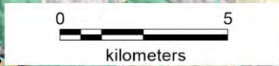


- Stream Sediment Anomalies
- ★ Historic HMC Gold Anomalies

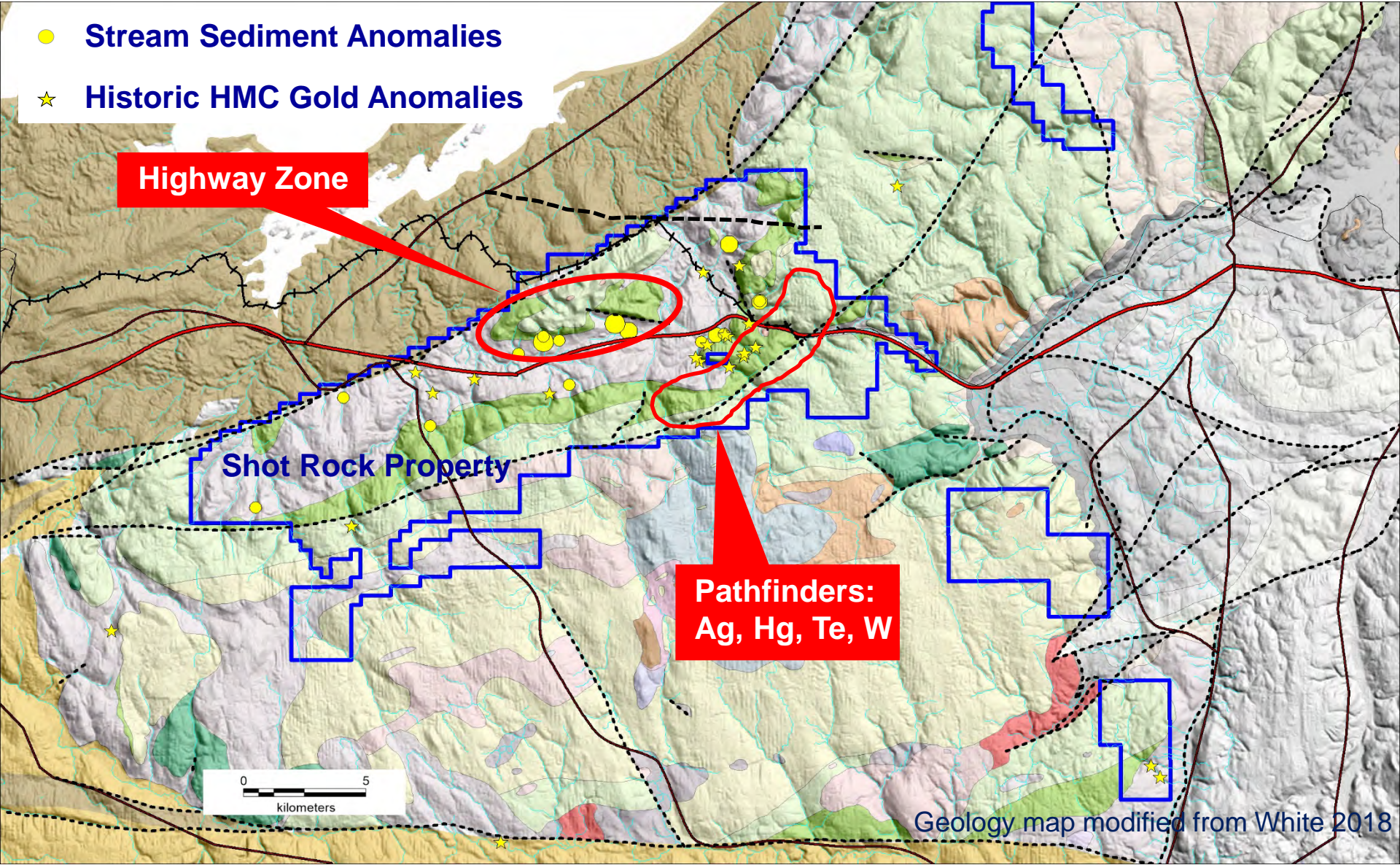
Highway Zone

Shot Rock Property

**Pathfinders:
Ag, Hg, Te, W**



Geology map modified from White 2018





VEIN TEXTURES – BOULDERS



Gold anomalous stream sediment samples led to the discovery of numerous angular boulders exhibiting classic low sulphidation epithermal textures and mineralogy including:

- **Colloform banding**
- **Crustiform banding**
- **Bladed calcite**
- **Jasperoid fragments**
- **Chalcedonic quartz**



NORTHERNSHIELD
RESOURCES INC.

OUTCROPPING QUARTZ VEINS

TSX-V: NRN



Further prospecting located outcrop exhibiting:

- Large banded quartz veins
- Zones of intense stockwork
- Brecciation
- Multiple phases of quartz veining



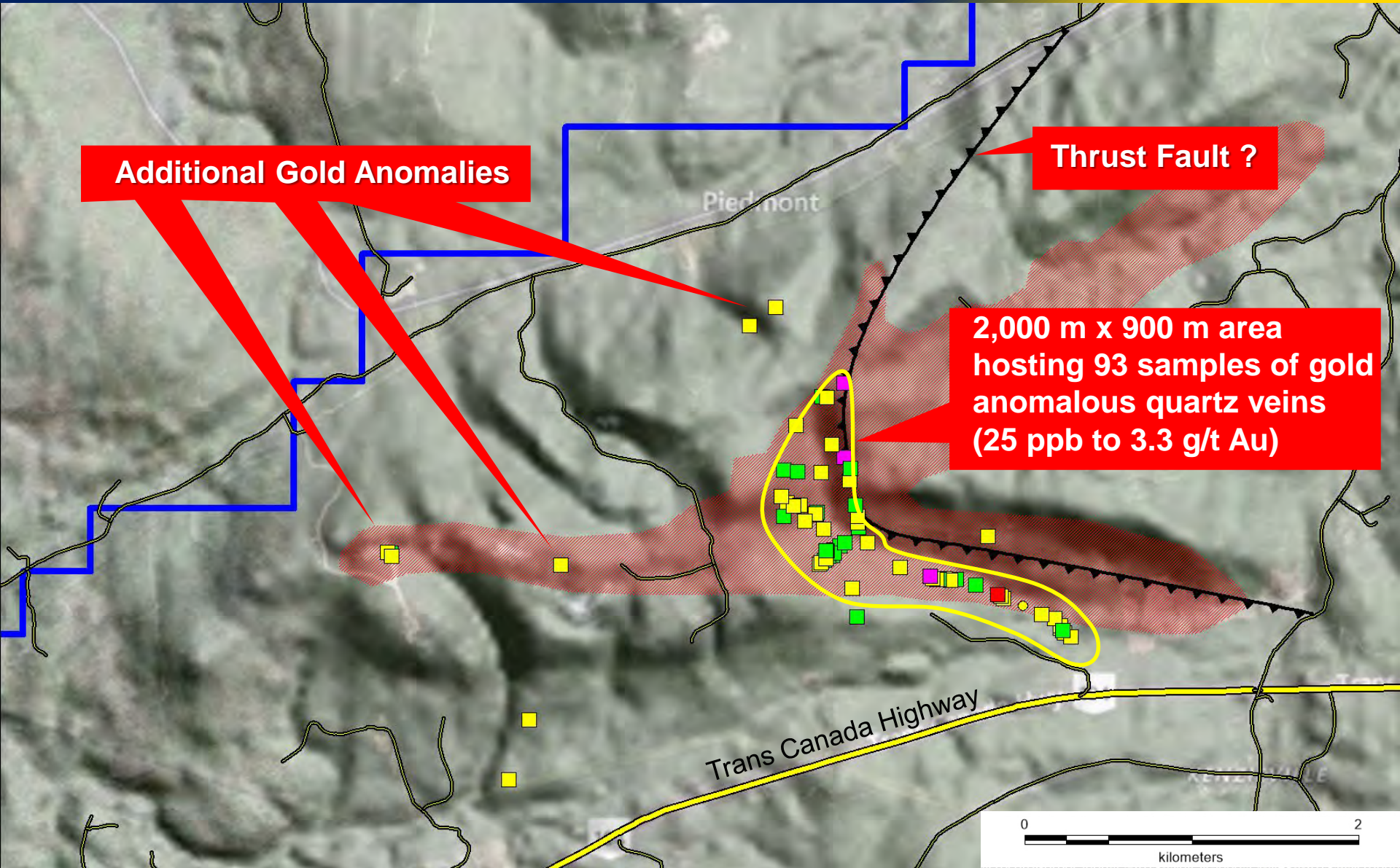
Colloform banded veins, breccias, stockwork veins and quartz vugs



Large sub-vertical banded quartz veins up to 45 cm thick



SHOT ROCK COMPILATION

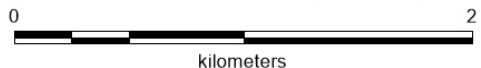


Additional Gold Anomalies

Thrust Fault ?

**2,000 m x 900 m area
hosting 93 samples of gold
anomalous quartz veins
(25 ppb to 3.3 g/t Au)**

Trans Canada Highway





NORTHERN SHIELD
RESOURCES INC.

LOW SULPHIDATION EPITHERMAL SYSTEMS

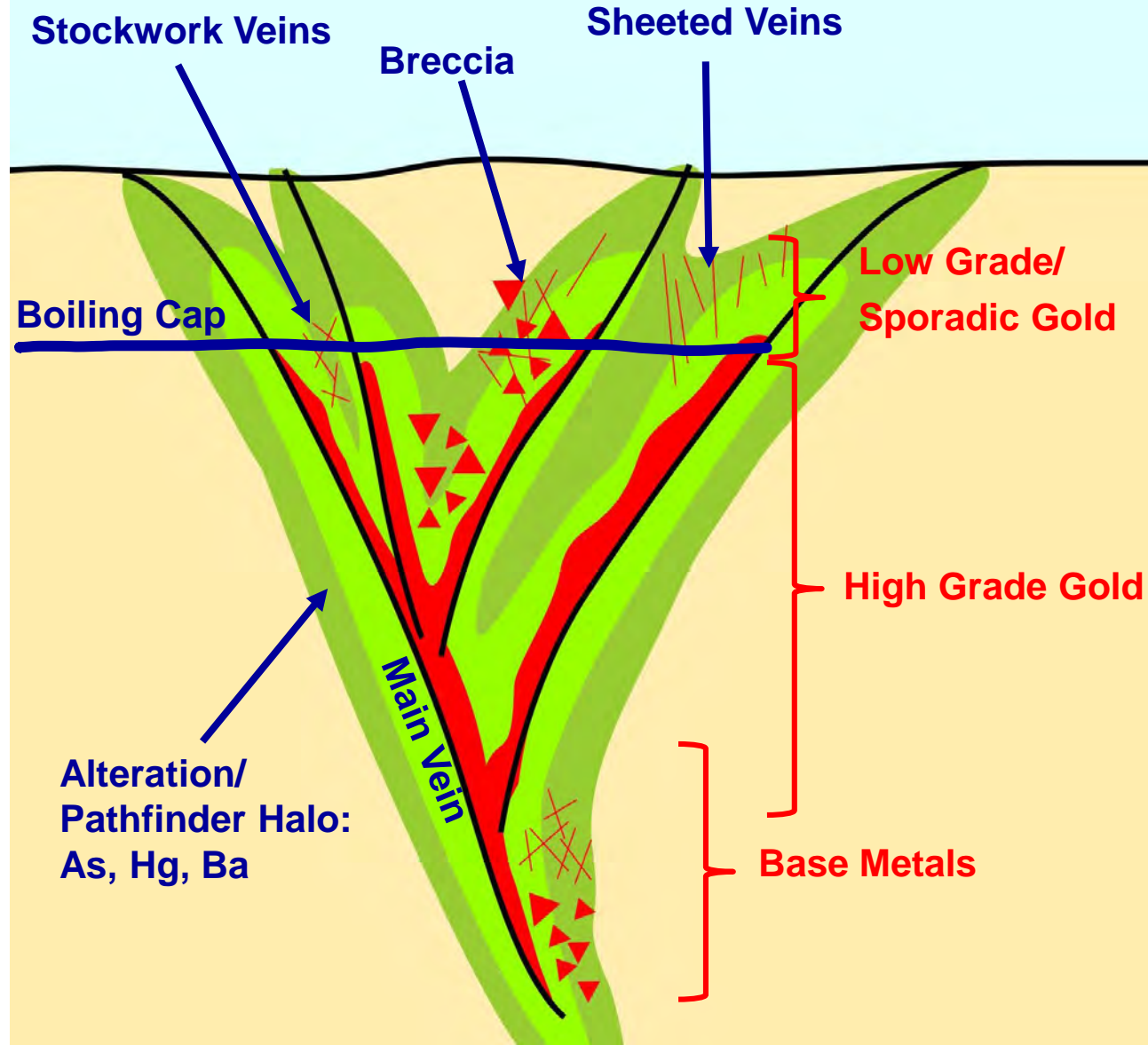
TSX-V: NRN



The geometry and gold-grade zonation of epithermal systems are important.

The location of the boiling cap is critical: even in rich deposits, the portion above the boiling cap typically only carries 10s of ppb Au. Low-grade can transition to bonanza grades very quickly at depth below the boiling cap.

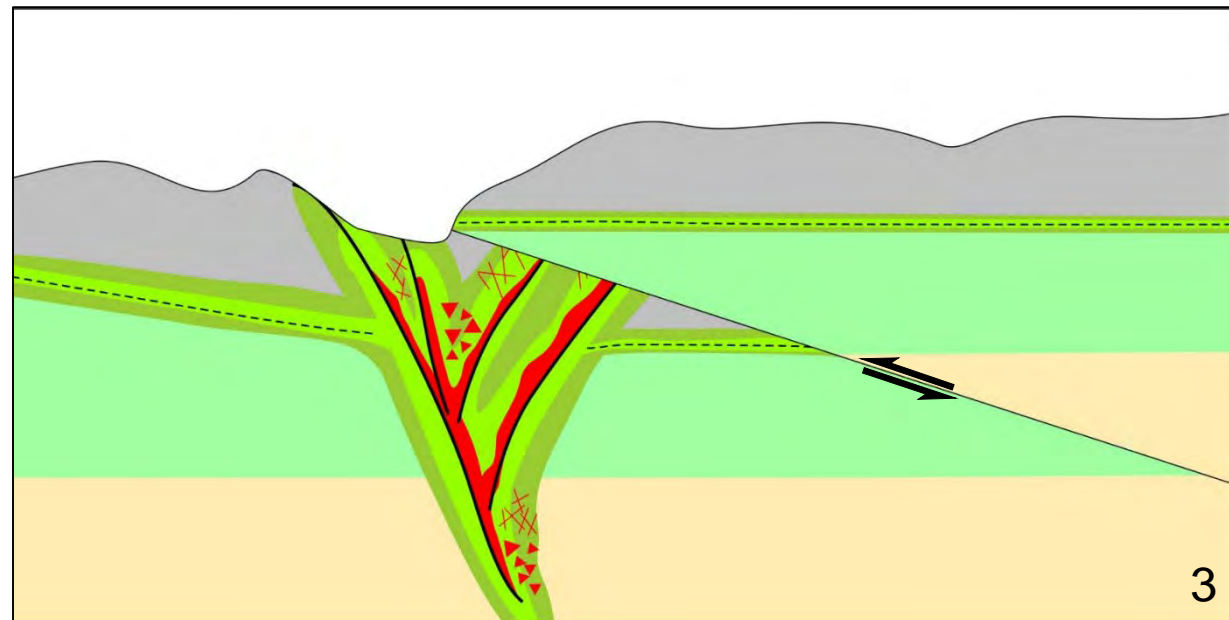
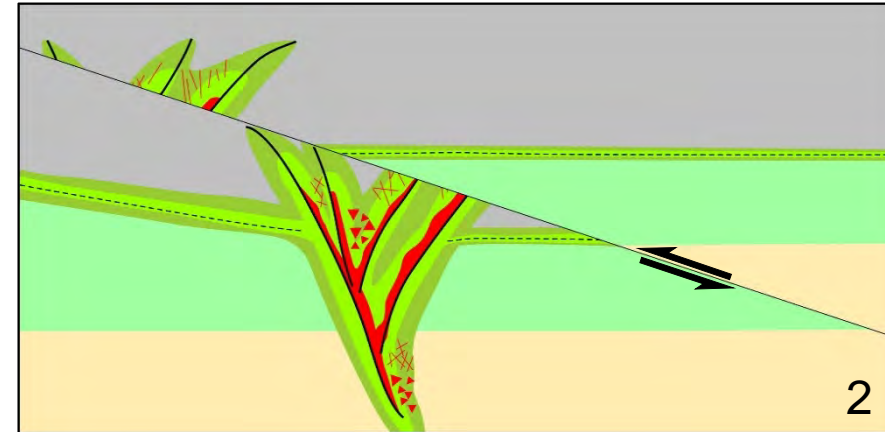
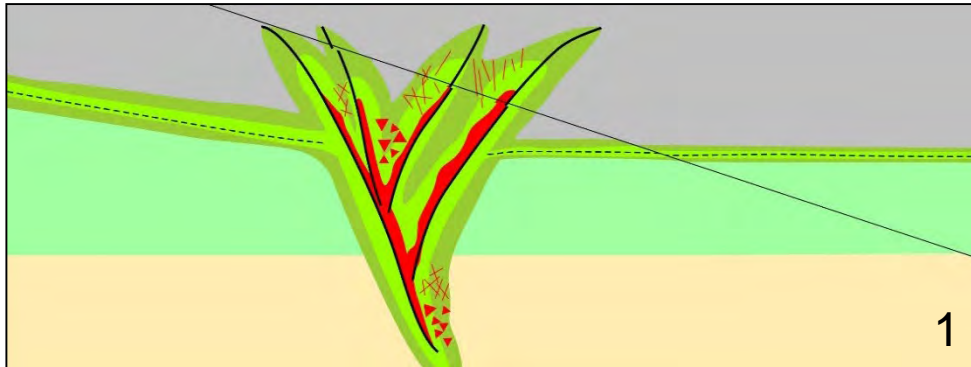
The textures in the quartz veins suggest that the erosional level at Shot Rock is above or at the boiling cap, hence the grades are very promising as to what we might find just a little deeper, below the boiling cap.





NORTHERNSHIELD
RESOURCES INC.

THRUST BLOCK



Early interpretation suggests that the geological units in the eastern portion of the Highway Zone were thrust stacked on top of those to the west.

Fortuitously, this protected much of the mineralized system from erosion. It also accounts for the sudden change in geochemical signature observed in the field.



NORTHERNSHIELD
RESOURCES INC.

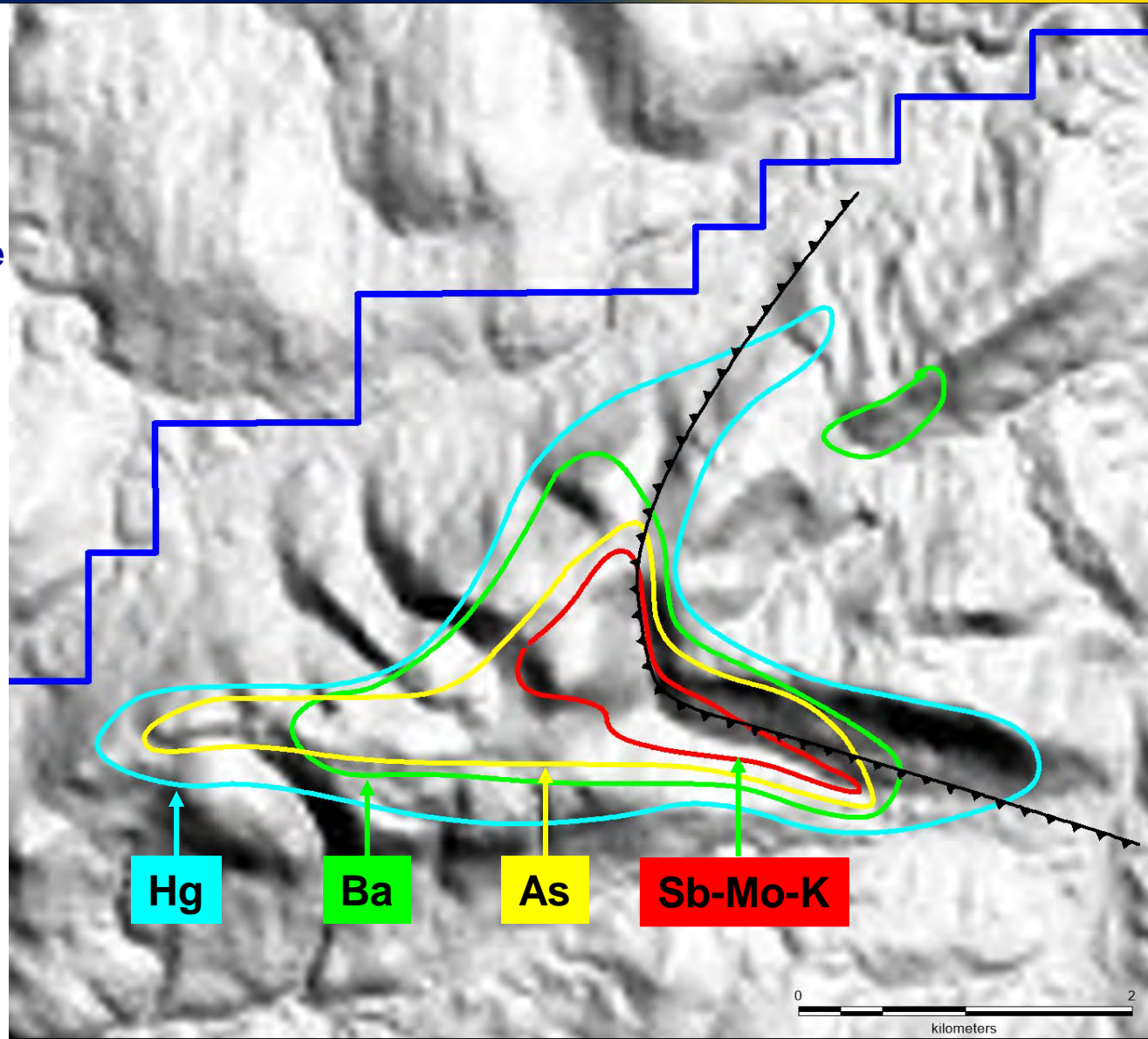
DISTINCT EPITHERMAL PATHFINDER HALO

TSX-V: NRN



The Highway Zone shows a classic zonation with an outer halo of Hg followed by progressive enrichment of Ba and As and, finally, a core of Sb, Mo and K associated more tightly with Ag-Au mineralization.

(Following Slide) Data compilation continues to highlight how distinctly anomalous the Highway Zone is in many of the pathfinder elements associated with low sulphidation epithermal gold systems. With a couple of exceptions, no other area within the property exhibits this distinct signature.

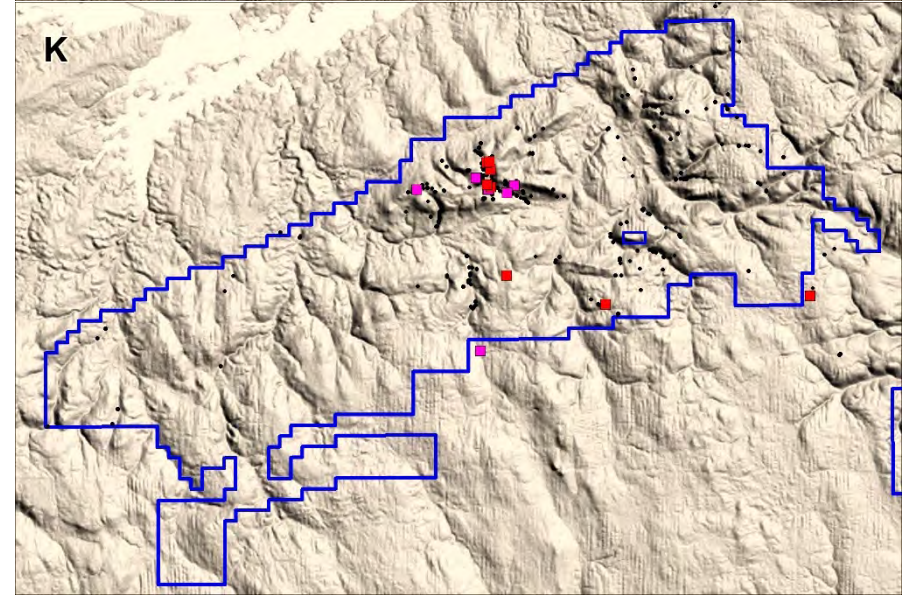
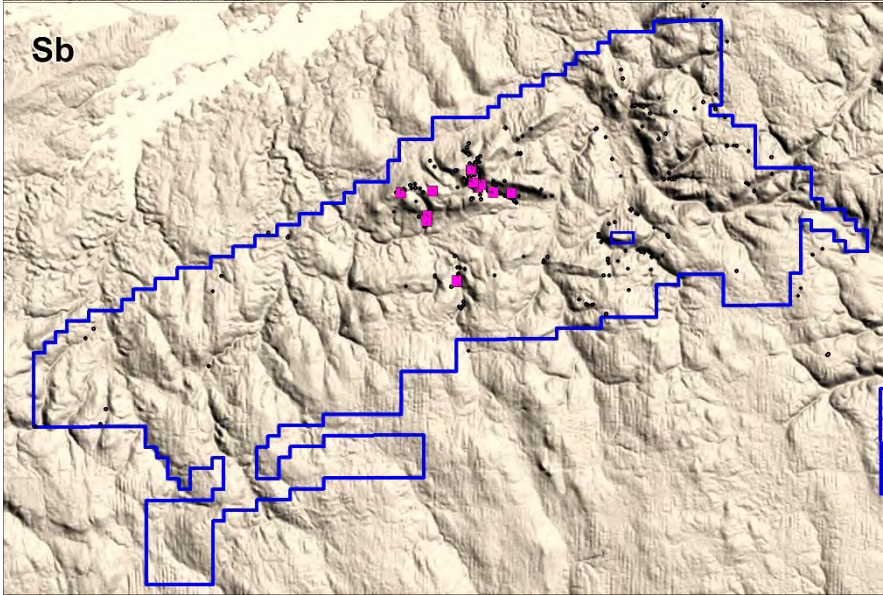
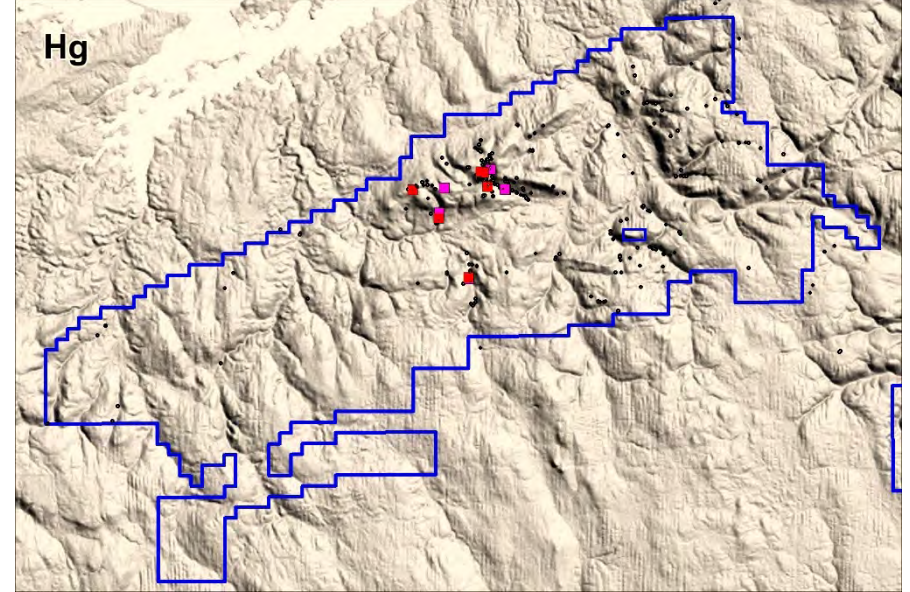
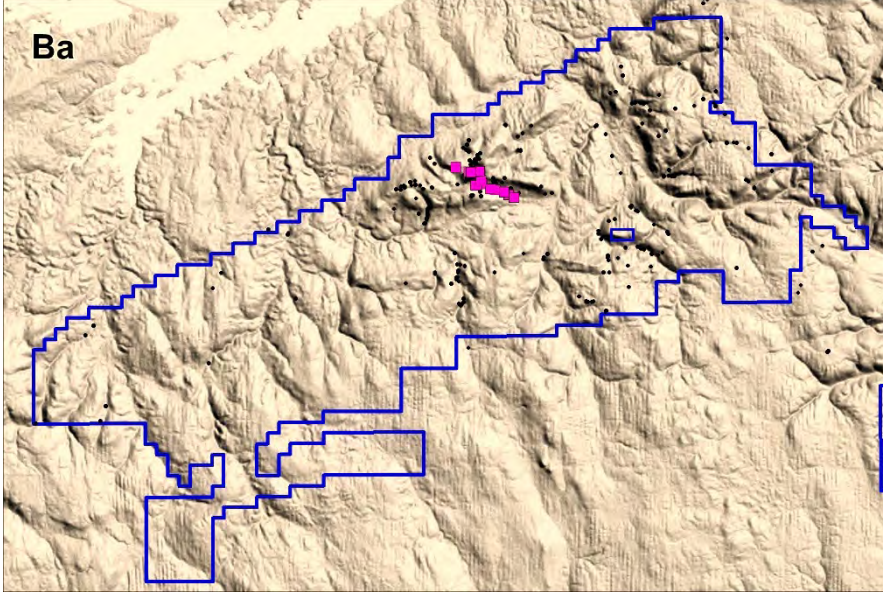




NORTHERN SHIELD
RESOURCES INC.

DISTINCT EPITHERMAL PATHFINDERS

TSX-V: NRN





EVIDENCE OF ACTIVE SYSTEM



Although at an early stage, we continue to check a lot of boxes regarding technical aspects associated with large epithermal gold deposits:



the fluids forming the veins are gold-rich, as indicated by the assays (Photo A);



efficient, vigorous boiling (Photo B);



prolonged history of hydrothermal activity, as indicated by strong alteration (Photo C), intense stockwork and multiple phases of quartz veining (Photo D);



multiple boiling events, as indicated by the numerous bands in quartz veins (Photo E).

All these criteria are prerequisites to “grow” large and productive epithermal systems.



NORTHERNSHIELD
RESOURCES INC.

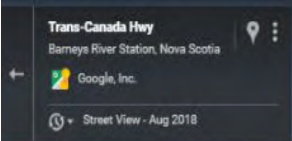
EVIDENCE OF A PRODUCTIVE SYSTEM

TSX-V: NRN





SHOT ROCK SUMMARY

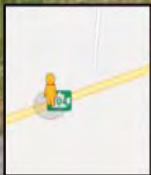


Outcrop with gold bearing quartz veins

Structural zone

- Discovery of highly-prized, low sulphidation epithermal gold system
- Spatially appears to be very extensive and has all the ingredients of a giant ore system
- Gold-bearing on surface
- Large scale potential
- Easily accessed year round

Recent results have provided the catalyst to move Shot Rock forward rapidly.





NORTHERN SHIELD
RESOURCES INC.

GASPÉSIE, QUEBEC PROPERTIES

TSX-V: NRN





NORTHERN SHIELD
RESOURCES INC.

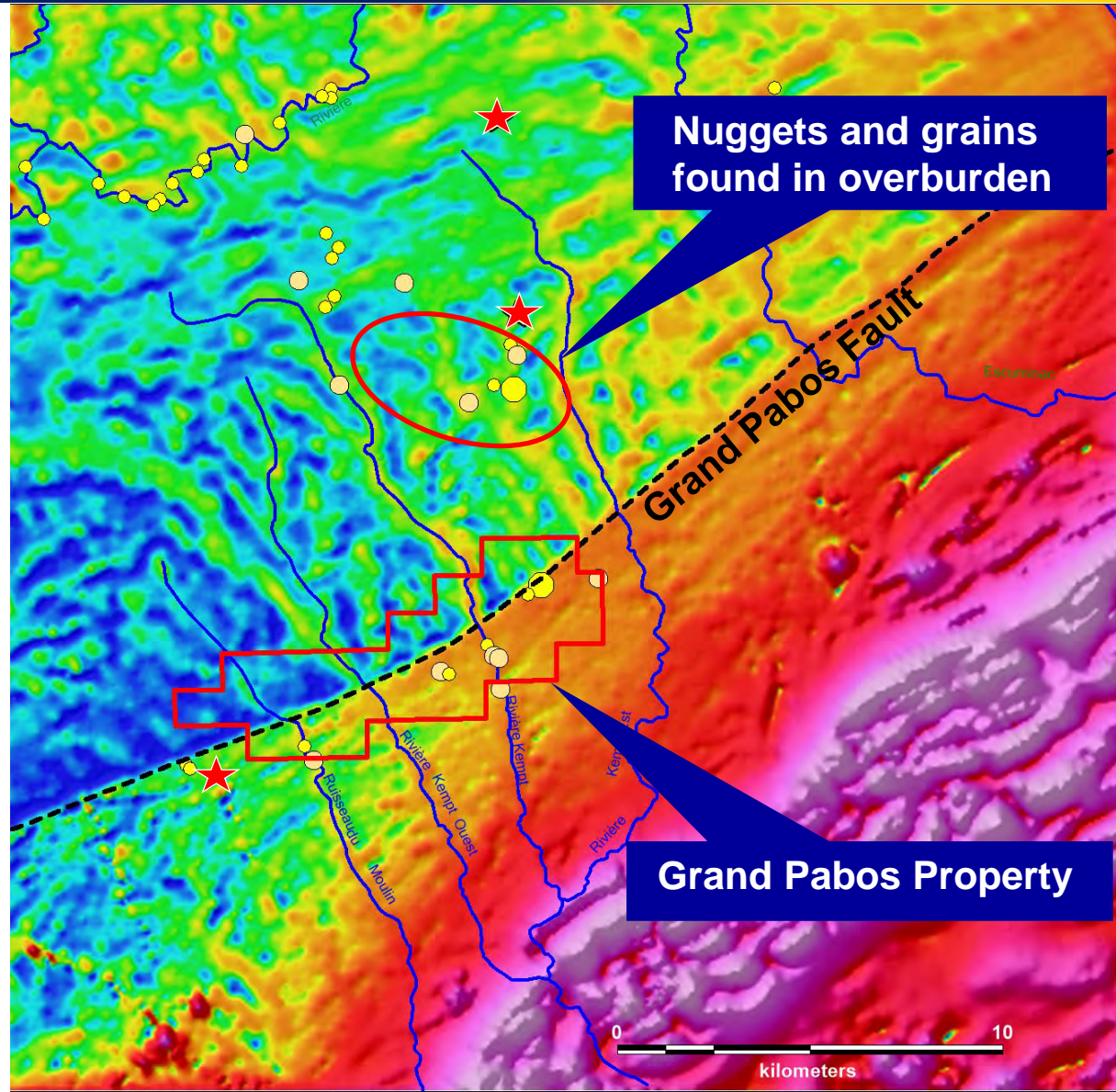
TSX-V: NRN

GRAND PABOS FAULT



- No known exploration within the property area despite existence of highly anomalous surficial sediment samples along major fault structure.
- Gold nuggets have been found in overburden north of the property.
- Nuggets contain tiny fresh pyrite and arsenopyrite crystals protruding from the gold. The un-weathered nature of the sulphides associated with the gold suggests a very local source.

★ Gold Occurrences

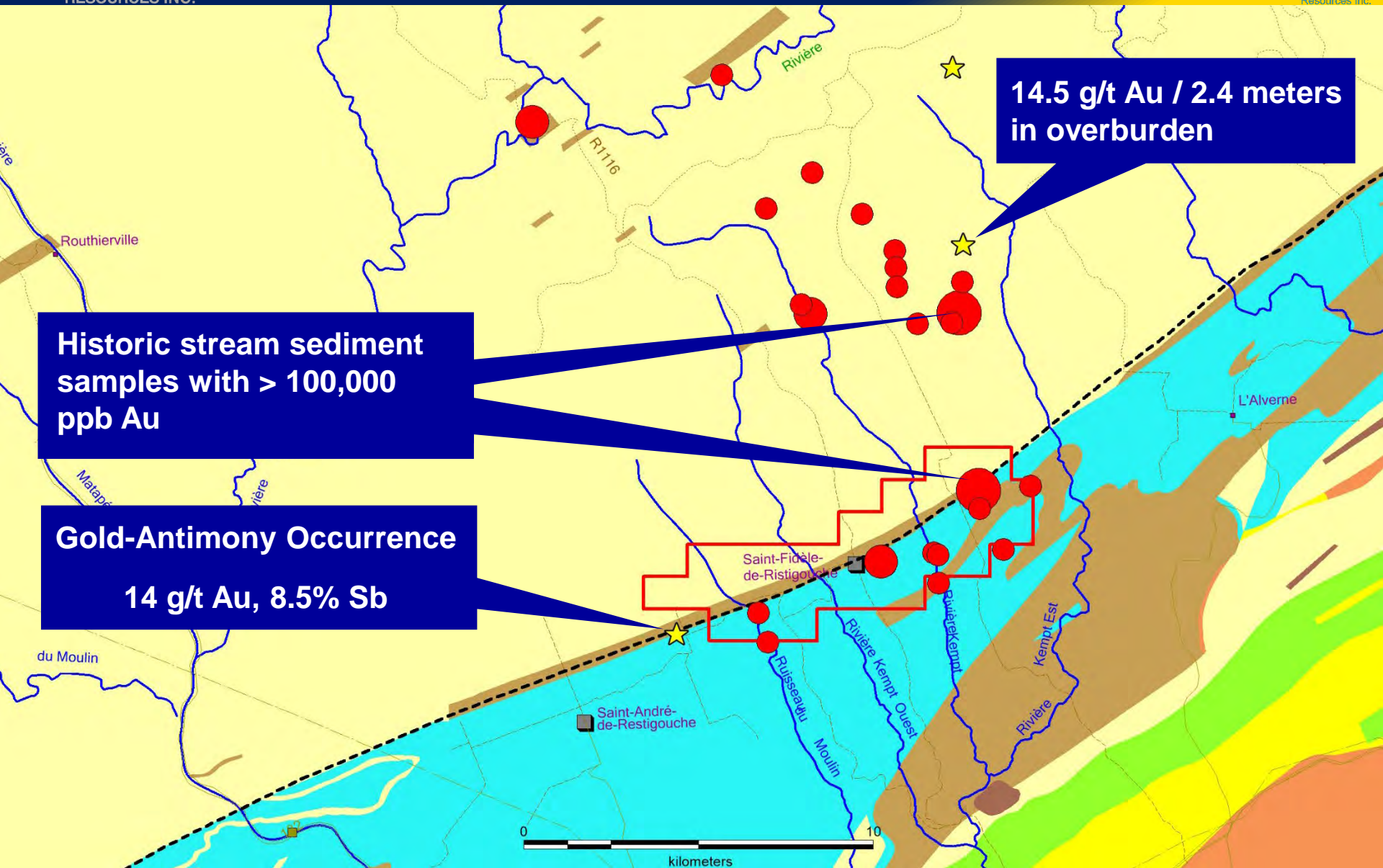




NORTHERN SHIELD
RESOURCES INC.

GRAND PABOS PROPERTY

TSX-V: NRN

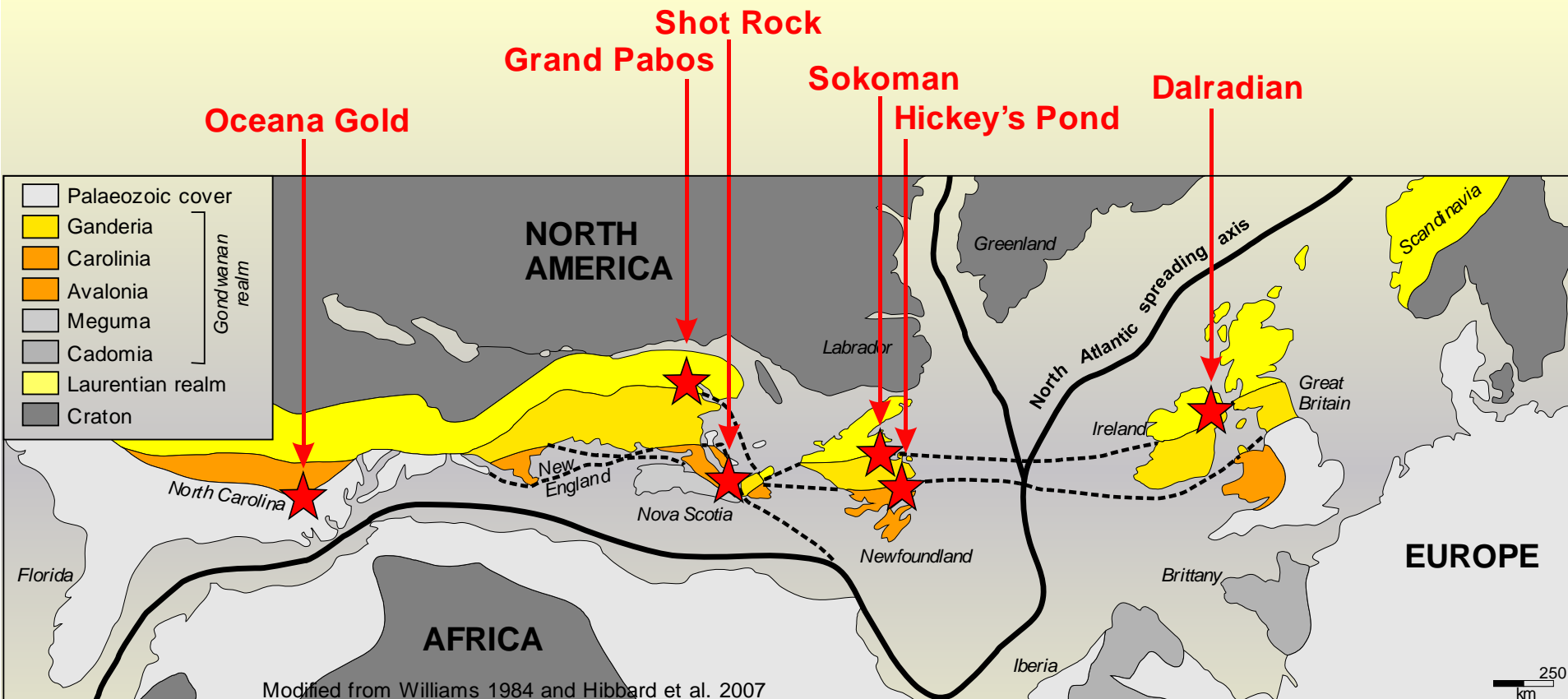




A NEW GOLD BELT?



The Shot Rock and Gaspésie properties sit in a belt of rocks that stretches from the Carolinas, through Gaspésie, Nova Scotia, Newfoundland, Ireland and into Scotland. Recent success along this belt highlight its potential to host significant gold deposits.





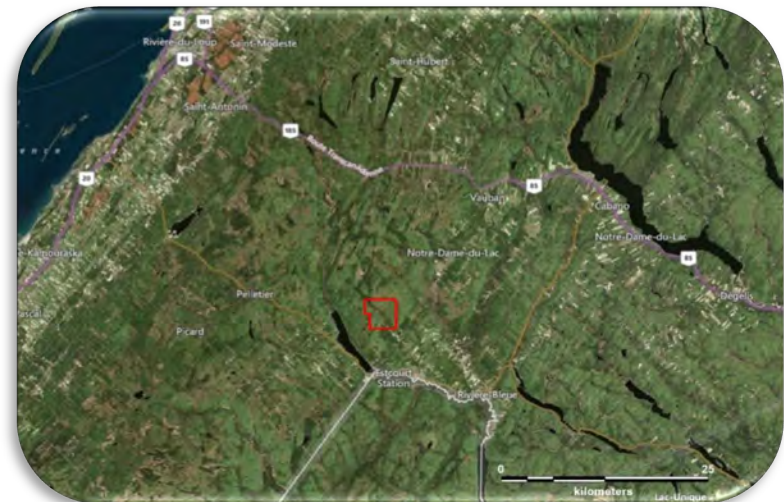
FIVE ISLANDS / PARRSBORRO, NOVA SCOTIA

- Five of the seven grab samples collected from sub-crop assayed between 0.23% and 0.57% Co and up to 0.19 g/t Au.
- Mineralization is hosted in a highly sheared, bleached, brecciated and veined basalt located at the margin of a granitic intrusion.



ESCOURT STATION, GASPÉSIE, QUÉBEC

- Occurrence of narrow quartz veins with up to 95.3 g/t Au.
- No known exploration.



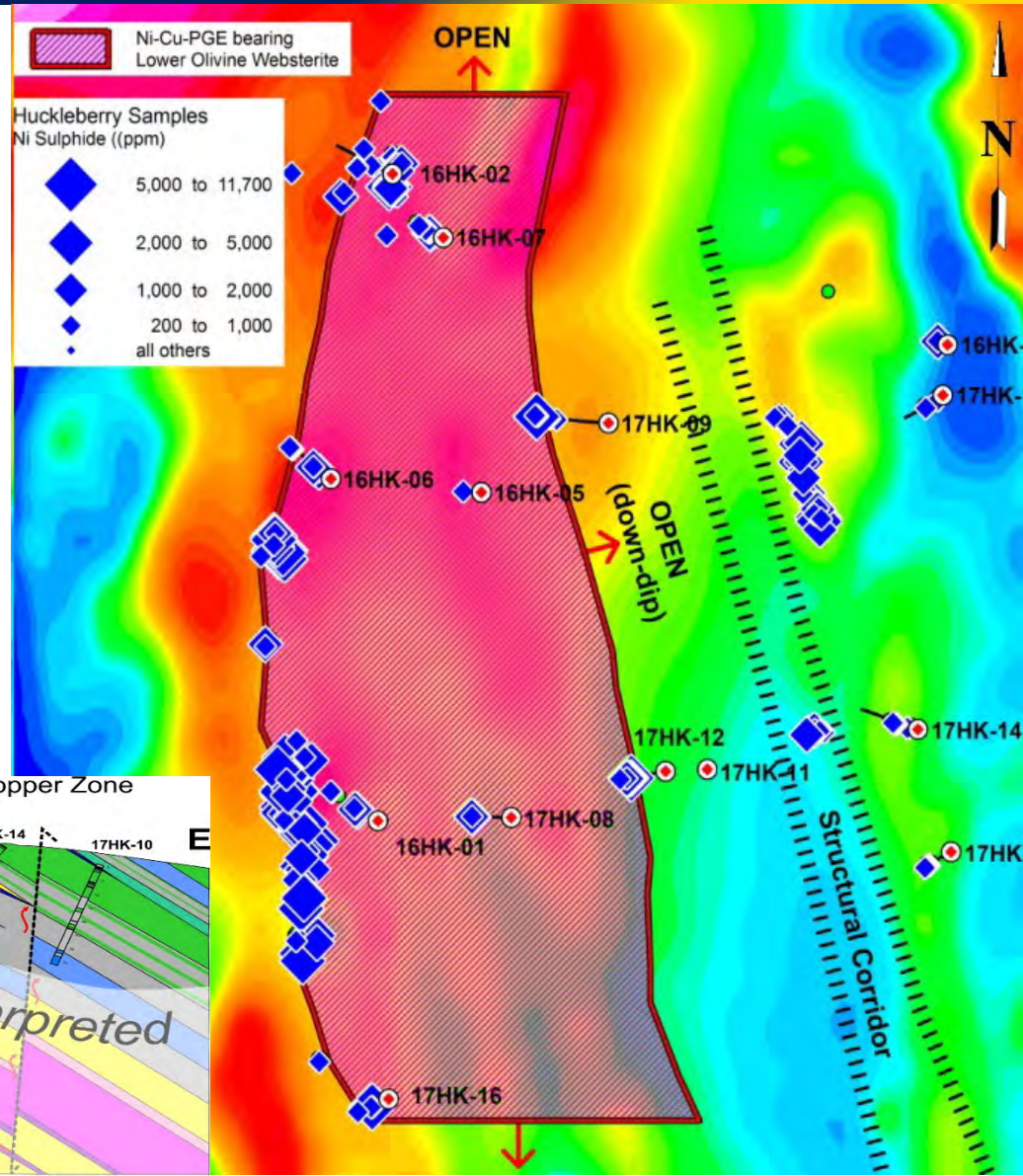
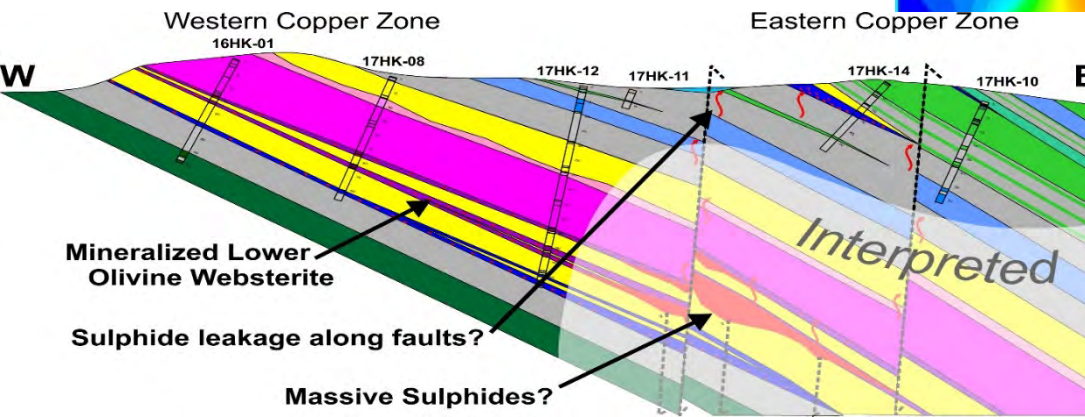


HUCKLEBERRY



HUCKLEBERRY, LABRADOR TROUGH, QUEBEC

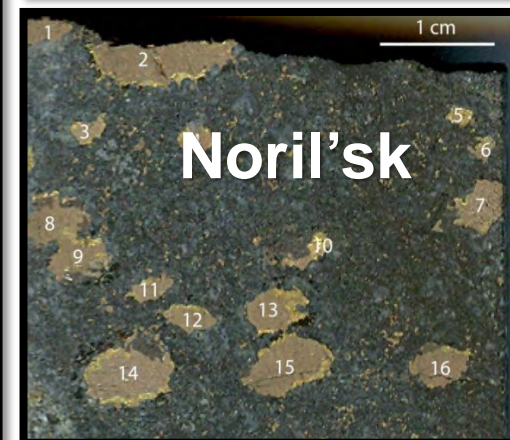
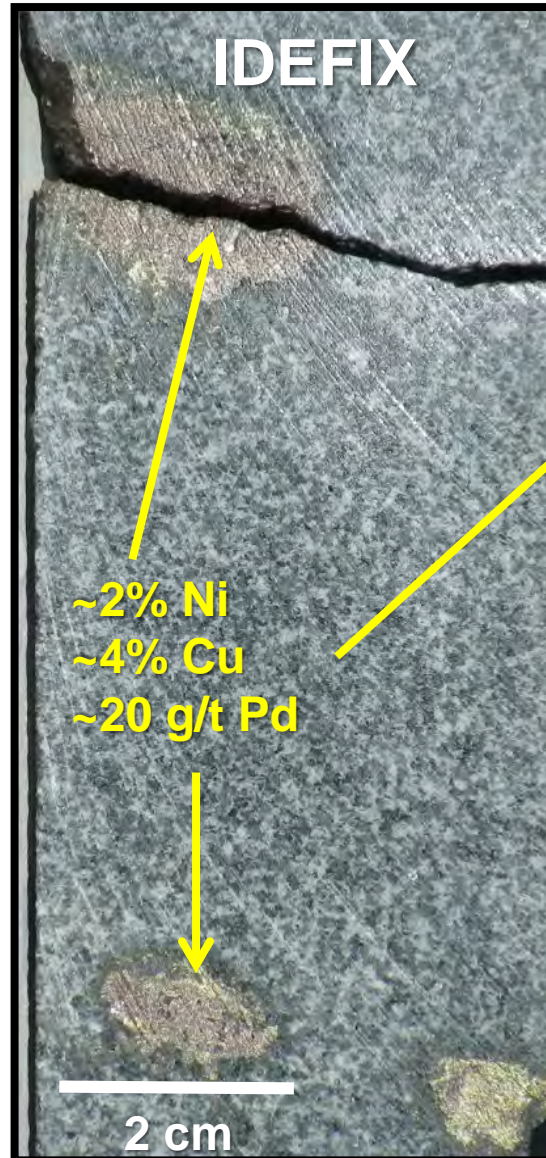
- Explored for large-scale magmatic nickel-copper-PGE deposit.
- Mineralization traced for a 3,000 m strike-length and a down-dip extension of over 1,200 m, with thickness increasing from 9 m at surface to 32 m down-dip
- Sufficient exploration expenditures to keep the claims for 7+ years





IDEFIX, LABRADOR TROUGH, QUEBEC

- Globules of sulphides observed in all 14 drill-holes along a 2.5 km strike-length.
- Globules are indicative of nearby massive magmatic sulphides.
- Globules very similar to the those observed adjacent to the massive sulphides at Noril'sk
- Sufficient exploration expenditures to keep the claims for 7+ years.





NORTHERNSHIELD
RESOURCES INC.

MOVING FORWARD



- **High resolution airborne magnetics planned for February at Shot Rock and Grand Pabos.**
- **Trenching planned for Shot Rock and Five Island Cobalt Showing.**
- **Intensive sampling and mapping at Shot Rock and Grand Pabos as soon as snow melts.**
- **New claims at Shot Rock and at Estcourt Station to be prospected.**
- **Drilling at Shot Rock (late summer).**
- **Putting together an experienced advisory/consultant team to help guide the advancement of the epithermal gold projects.**





NORTHERNSHIELD
RESOURCES INC.

CORPORATE



DIRECTORS

Russ Richards (Chairman)	Private wealth manager in Atlanta, Georgia; previously investment banker in Atlanta, London and Lagos
Dr. Frank Santaguida	Currently VP-Exploration with First Cobalt Inc.; previously with First Quantum, OGS, Falconbridge/Xstrata
Marcus Archer	Partner with Norton Rose Fulbright LLP in Calgary, 20 years experience in corporate law with focus on financings, mergers, corporate governance and regulatory compliance
Dr. Scott Jobin-Bevans	Past President of PDAC; founder and director of CCIC, a Canadian-South African geological consultant group with a strong background in PGE exploration

MANAGEMENT

Ian Bliss	CEO/President/Director
Samuel Legg	CFO
Christine Vaillancourt	Chief Geologist

CAPITAL STRUCTURE

Common Shares O/S	208M
Fully Diluted	226M
Stock Price	C\$0.05
Market Capitalization	C\$10M
Treasury	C\$0.3
Debt	Nil

A Unique Opportunity...

NORTHERN SHIELD RESOURCES INC.
55 Metcalfe Street
Suite 500
Ottawa, ON Canada K1P 6L5

Ian Bliss, President & CEO
+1.613.232.0459 x 1001
www.northern-shield.com
info@northern-shield.com



TSX-V: NRN