

SHOT ROCK PROPERTY

August Update





NORTHERN SHIELD
RESOURCES INC.

SHOT ROCK – KEY UPDATES



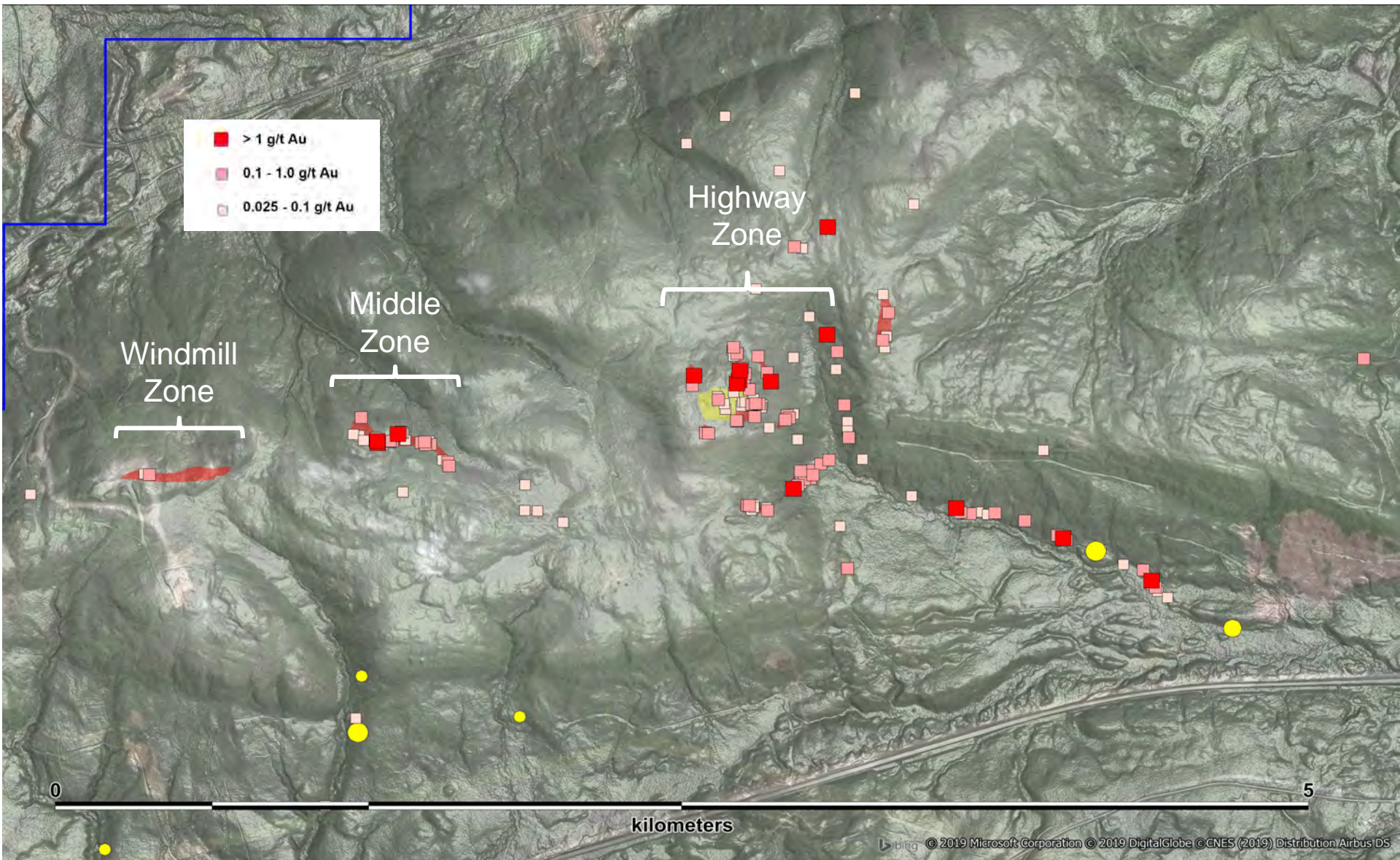
- Identification of a silica cap in the Highway Zone.
 - This confirms the very high erosional level of the system.
 - Gold is not expected in the silica cap unless there has been sporadic “leakage” from the epithermal system below.
- Epithermal stockwork veining is observed on the flanks of the hill where the silica cap has been eroded.
 - Stockwork likely represents the very top of a much larger epithermal vein system.
 - Stockwork veins consistently carry gold, typically in the 0.1-1.0 g/t range and associated with elevated Sb, Mo and K.
- Rapidly growing understanding of the system and confidence in the developing geological model on which drilling will be base.
- System broadens and strengthen in a west to east direction; rocks and stream sediment samples anomalous in pathfinders suggest a continuation of the system east of the Highway Zone.



NORTHERN SHIELD
RESOURCES INC.

SHOT ROCK PROPERTY GOLD DISTRIBUTION

TSX-V: NRN



Silica Cap

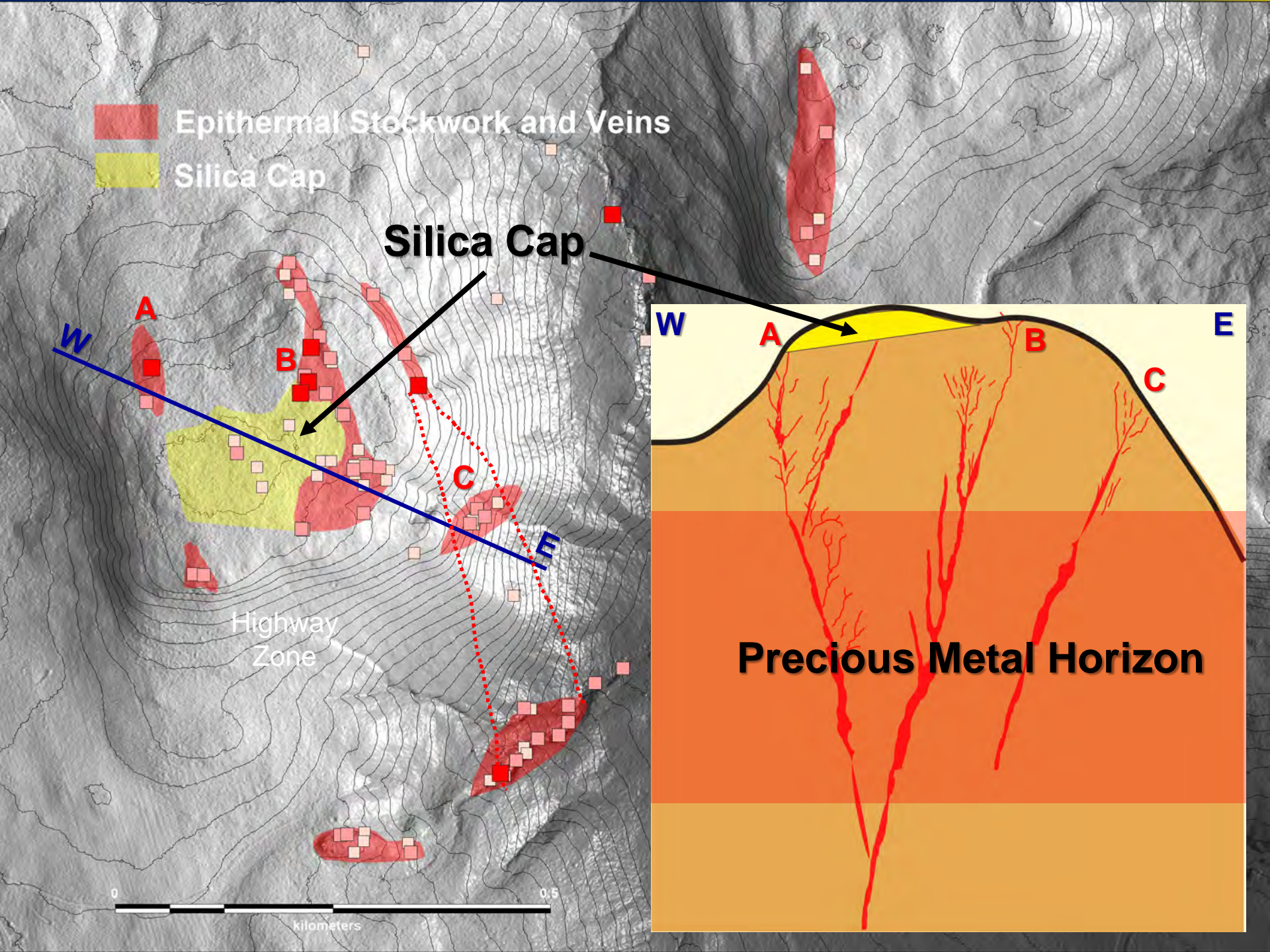


Silica replacement of bedded lacustrine sediments creates a sub-horizontal siliceous “cap” to the epithermal system. Silica caps are impervious and hence do not typically contain any gold, unless there is sporadic “leakage” from the epithermal system below.

Silica Cap

0551218 5049564

Portions of the silica cap resemble sheeted quartz veins due to their strongly layered nature.





Clay-altered
mafic Volcanic

A geological photograph of a rock outcrop. A hammer with a blue handle and a pink cloth tied around its head is positioned at the top center. A red line is drawn across the image, separating the upper and lower rock units. A pink tag with the text 'QF05-4727B' is attached to the rock. The lower unit is a light-colored, banded quartz vein, and the upper unit is a darker, clay-altered mafic volcanic rock.

Crustiform Banded Quartz Vein

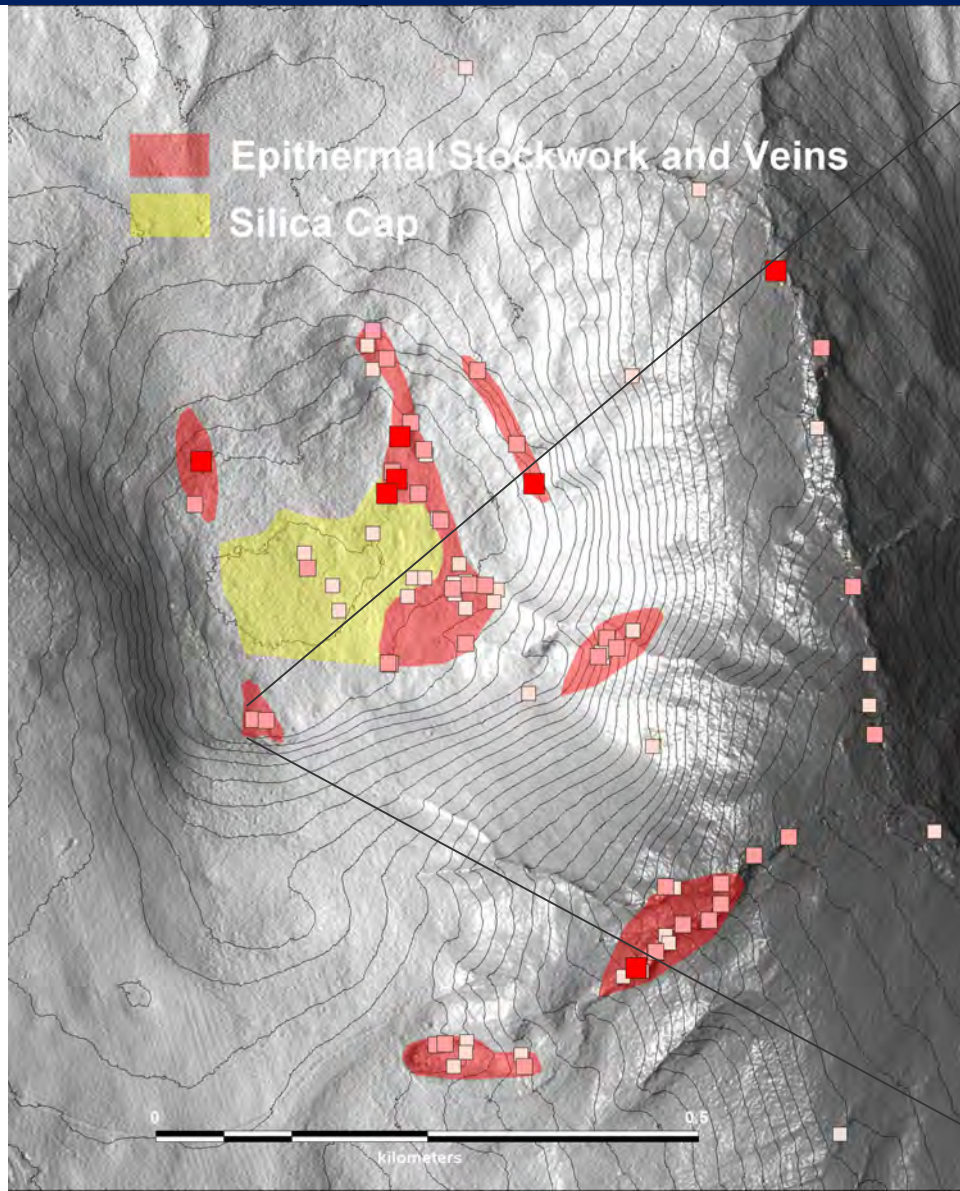
One of the larger veins from Stockwork
Zone B on previous map: 1.3 g/t Au



NORTHERN SHIELD
RESOURCES INC.

SHOT ROCK PROPERTY

TSX-V: NRN





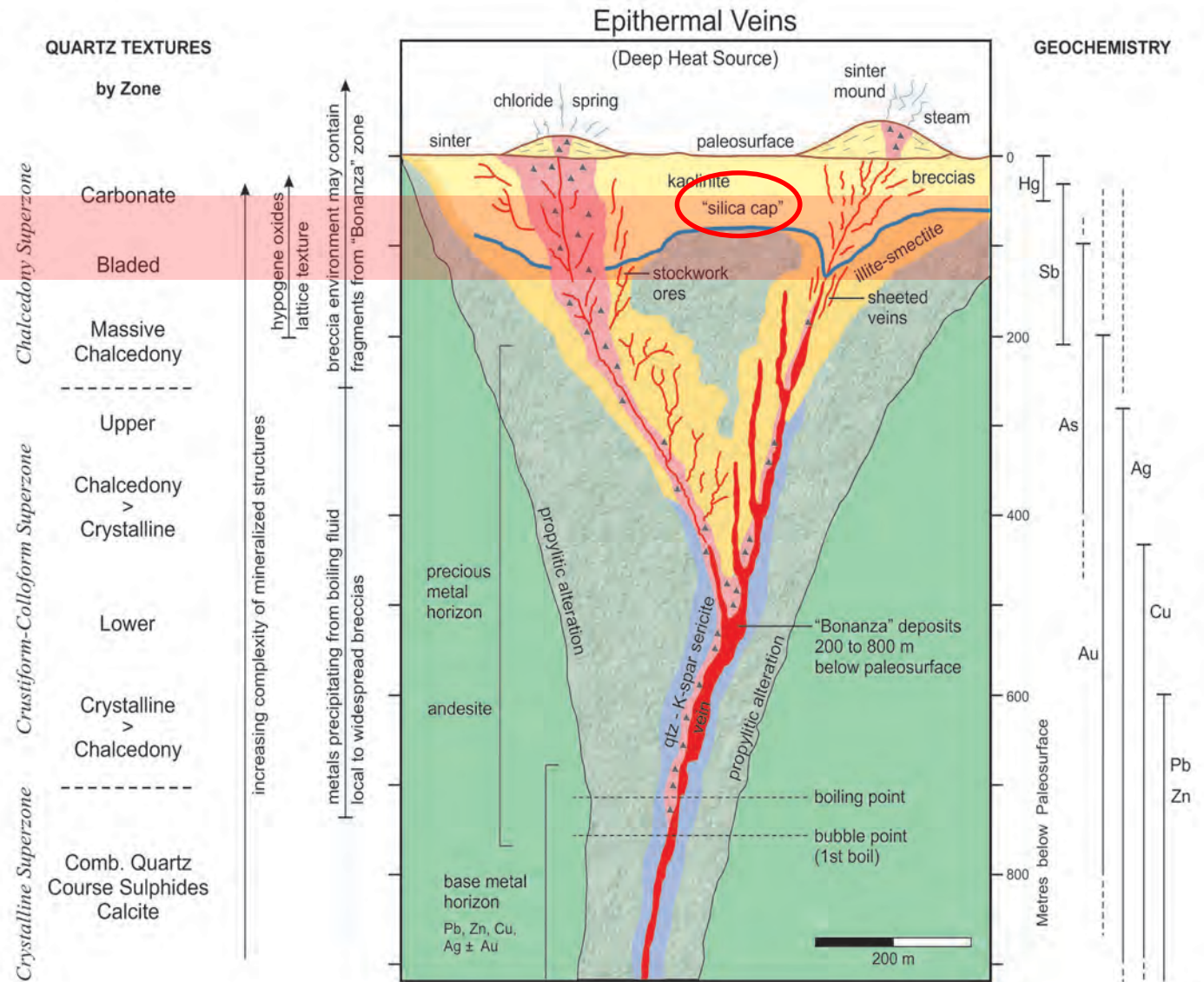
NORTHERN SHIELD
RESOURCES INC.

LOW SULPHIDATION EPITHERMAL SYSTEMS

TSX-V: NRN



Shot Rock
Erosional Level





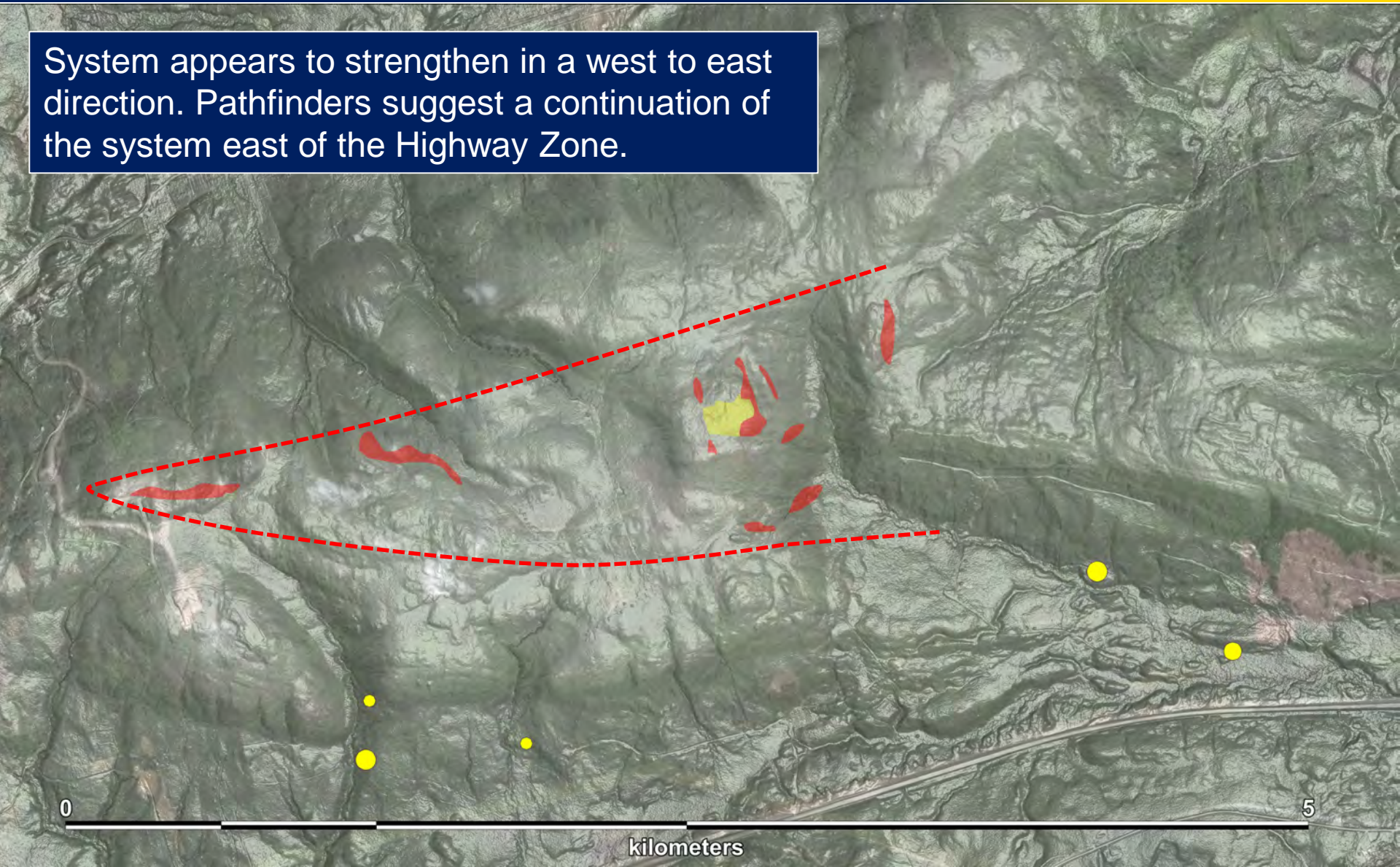
NORTHERNSHIELD
RESOURCES INC.

TSX-V: NRN

SHOT ROCK PROPERTY



System appears to strengthen in a west to east direction. Pathfinders suggest a continuation of the system east of the Highway Zone.



A Unique Opportunity...

NORTHERN SHIELD RESOURCES INC.
55 Metcalfe Street
Suite 500
Ottawa, ON Canada K1P 6L5

Ian Bliss, President & CEO
+1.613.232.0459 x 1001
www.northern-shield.com
info@northern-shield.com



TSX-V: NRN